

Anritsu

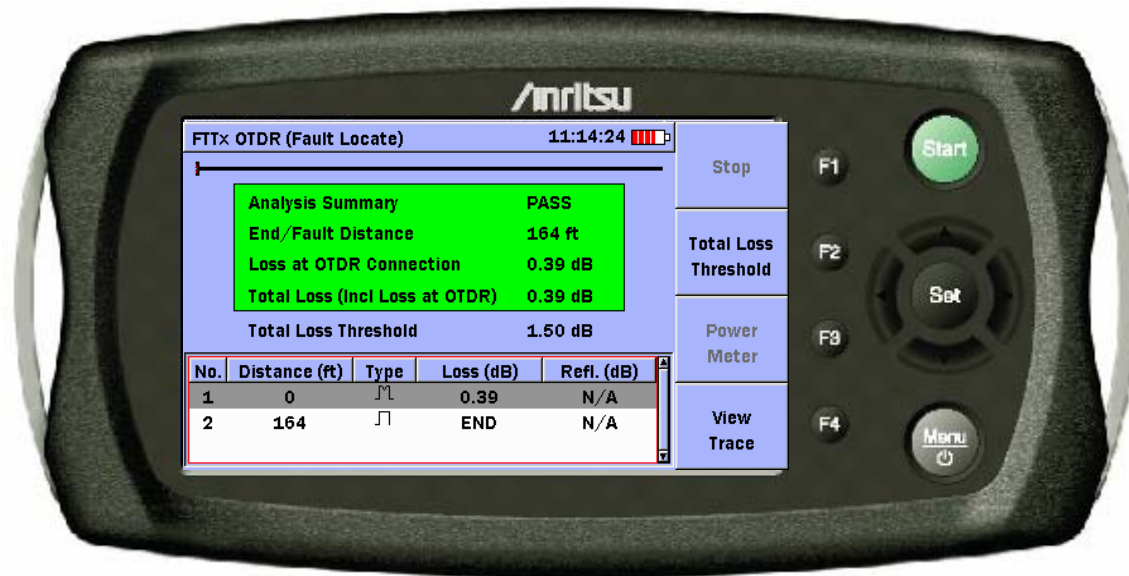
Discover What's Possible™



MT9090A/MU909011A Drop Cable/Premise Fault Locator Customer Presentation

TELE SÜDOST NETZE GMBH

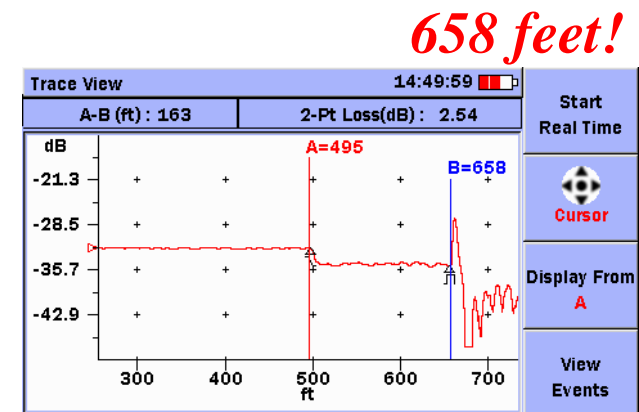
Introducing the MT9090A with MU909011A Drop Cable Fault Locator Module



MT9090A - Purpose Built for Technicians

PURPOSE-BUILT FOR TESTING SHORT FIBERS

- » Unique – only true short-fiber tester available
- » Perfect solution for FTTX drop cables, CO, wireless premise
- » Integrated 10m launch cord standard
- » Dynamic range of >7dB (10dB typ)
 - For testing up to 10km (~6 miles)
- » Unit will display transmission power levels, then fault locate with the press of a single button
- » Testing parameters are fixed
 - Operation simplified
 - Ensures proper settings and valid results



MT9090A - Purpose Built for Technicians

DESIGNED FOR HIGHLY PORTABLE FIELD USE

- » Easily held with one hand
 - Palm-size (7.5"x3.8"x1.9")
 - Approximately 2 lbs (800g)
 - Smallest fault locator available
- » Long battery life
 - 4 hours typical
 - 3 hour recharge
 - NiMH battery pack or "AA" operation
- » Rugged design
 - Sealed design – no vents or fans
 - Wrist strap to prevent "accidental" drops
- » **C**olor indoor/outdoor display standard
 - 4.3" high resolution
 - Landscape format naturally fits OTDR trace



MT9090A - Purpose Built for Technicians

THE RIGHT FEATURES

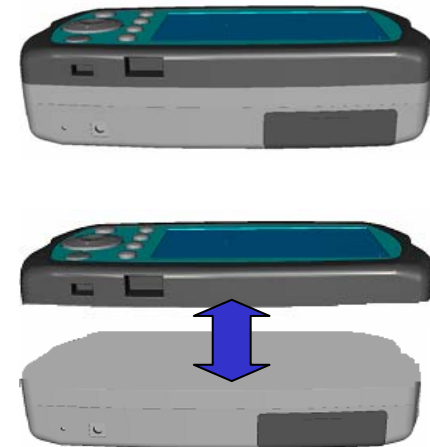
- » Powerful technician tool
 - Verify power level and fault locate through same port
 - Instantly isolates problem
- » Quick boot-up
 - Ready to test in <15 seconds
- » Easy to use
 - Single wavelength
 - True one-button fault location
 - Clean, simple front panel
 - Fixed testing parameters
 - Quick fiber evaluation
 - Clear GO/NO GO results
 - Full analysis table and trace view also available



MT9090A - Purpose Built for Technicians

VALUE...without compromise!

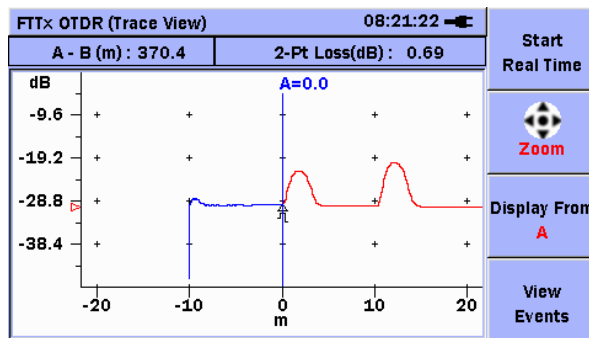
- » Cost-effective installation and maintenance tool
 - Under \$5,000 loaded
 - Softcase, manual, charger, battery standard
 - Complete Fault Location at a loss test set price
- » Good specs despite the size/price
 - <1m dz, 5 cm sampling
- » User configurable (modular) platform
 - 1550nm or 780nm
 - UPC or APC connector options
 - Power meter, VLD options
- » Complete data management
 - ~500 traces internal/10,000+ with USB
 - Easy “drag and drop” transfers to PC
 - Reporting and printing with NetWorks PC software



MT9090A - Purpose Built for Technicians

Additional Highlights

- Built-in 30 ft (10 m) launch fiber
 - » Measure front-end connection without additional patchcords
 - » Initial connector loss shown as well as total loss including initial connection
 - » Color coded for easy identification
 - Blue – launch fiber
 - Red – fiber under test
 - » Can be enabled/disabled
- Connector inspection option
 - » 400x image displayed
 - » All software pre-loaded
 - » Eye-safe
 - » Image save/recall
 - » Hardware includes probe/tips



Simple, One-button Operation

1. Connect fiber and press “START”
 - » UPC or APC connectors available
 - » Single port ensures correct port connection

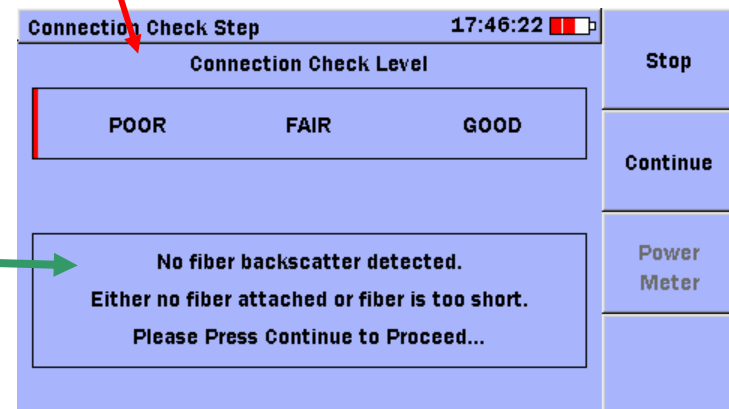
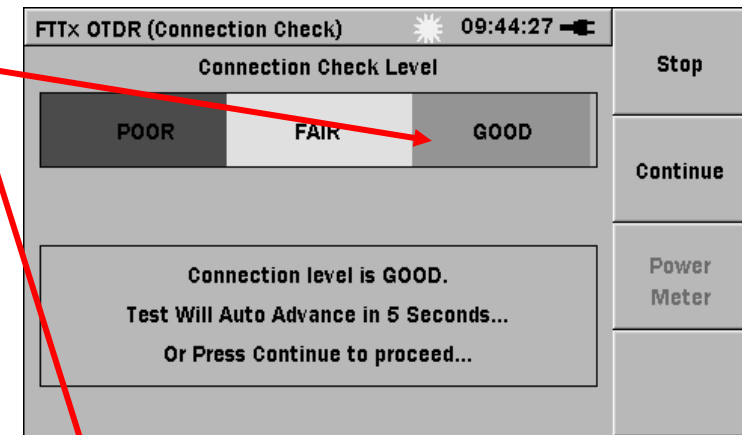


True one-button testing



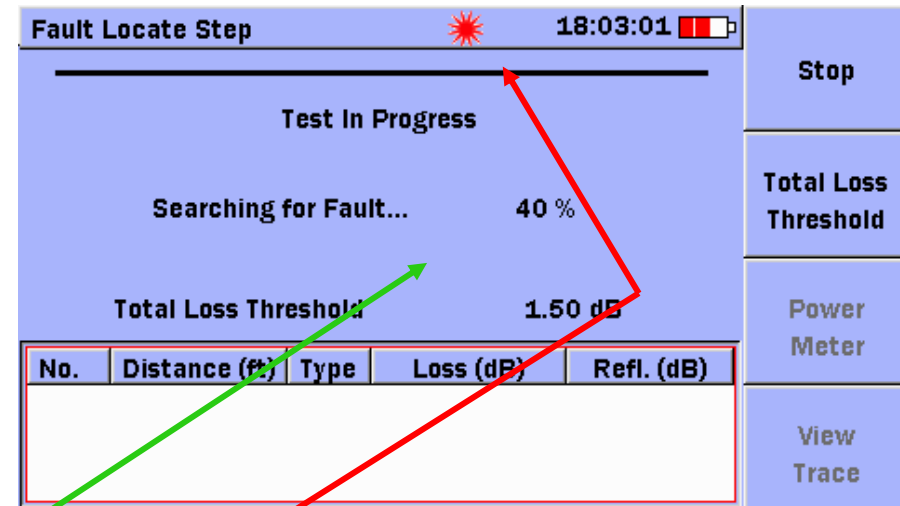
Intelligence Built-in

- Fiber connection verified
 - » Bad connections = bad results
 - » No false results if connection is dirty or not seated
 - » Test automatically begins in 5 seconds if good
 - » Instructions provided to guide novice users



Error Free Testing for any Skill Level

- Parameters fixed to ensure correct settings
 - » Range set to 8,000ft
 - » Pulse width fixed at ~5ns
 - » Averaging set to 5120 (approx. 10 sec)
- Test progress shown
- “Laser on” icon shown



Fixed parameters and automated testing sequence designed to ensure novice users get accurate results

Automated Testing Sequence

2. Upon completion, analysis automatically runs

- » Cable PASS/FAIL classified and color-coded (threshold defined)
- » Length/break location shown
- » Total span loss (including front-end connector) shown
- » Faults/bad splices listed (threshold defined)

No.	Distance (ft)	Type	Loss (dB)	Ref. (dB)
1.1	0	↗	N/A	N/A
1.2	4	↘	N/A	>-60.6
1.3	50	↘	END	>-69.0

No.	Distance (ft)	Type	Loss (dB)	Ref. (dB)
1.1	0	↗	N/A	N/A
1.2	5	↘	N/A	>-58.6
2	55	↘	END	>-70.0

No user intervention!

Full Event Details Available

- Events details available
 - » Highlight event in table
 - » Press “set” for expanded information
 - » Full description and recommendations provided
 - » Press “OK” to clear

Fault Locate Step 18:12:20

Analysis Summary PASS

End/Fault Distance 55 ft

Loss at OTDR Connection 0.67 dB

Total Loss (Incl Loss at OTDR) 0.67 dB

Total Loss Threshold 1.50 dB

No.	Distance (ft)	Type	Loss (dB)	Refl. (dB)
1.1	0	✓	N/A	N/A
1.2	5	□	N/A	>-58.6
2	55	□	END	>-70.0

Buttons: Stop, Total Loss Threshold, Power Meter, View Trace

FTTx OTDR (Fault Locate) 16:55:17

Analysis Summary PASS

Event Description

The event at 0ft is the OTDR bulkhead connection which has a loss of 0.22dB. If the loss is excessive, check the connection to the OTDR or patchcord.

Buttons: OK, Stop, Loss Hold, er er, view Trace

Trace View Available

3. Press “View Trace” if desired for more information

» Trace graph dynamically zooms to fill screen

» Real time testing available

Fault Locate Step 18:12:20

Stop

Analysis Summary PASS

End/Fault Distance 55 ft

Loss at OTDR Connection 0.67 dB

Total Loss (Incl Loss at OTDR) 0.67 dB

Total Loss Threshold 1.50 dB

No.	Distance (ft)	Type	Loss (dB)	Refl. (dB)
1.1	0	/	N/A	N/A
1.2	5	\	N/A	>58.6
2	55	\	END	>70.0

Power Meter

View Trace

FTTx OTDR (Trace View) 08:21:22

A - B (m) : 370.4 2-Pt Loss(dB) : 0.69

Start Real Time

Zoom

Display From A

View Events

Simple, Straightforward Set-ups

- General Tab

- » Date & time format

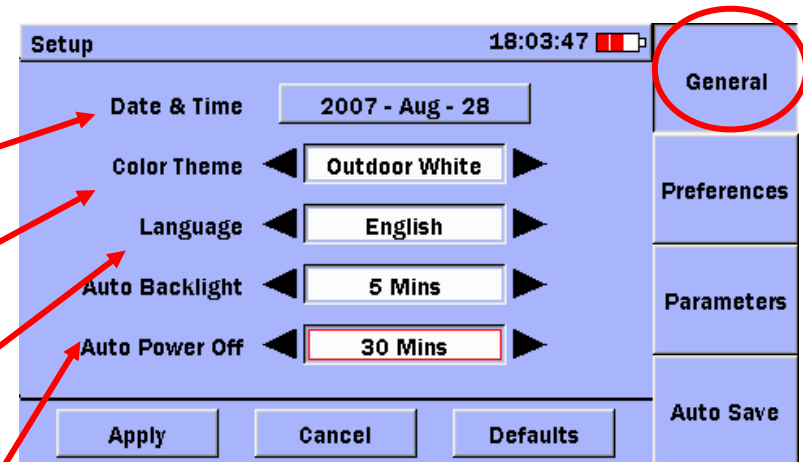
- » Color scheme

- Outdoor white

- » Languages

- » Backlight timeout

- Improves battery life



All set-ups on four, single page tabs – no multiple page menus for simple operation

Simple, Straightforward Set-ups

- Preferences Tab

- » Power meter

- Add to test sequence for troubleshooting

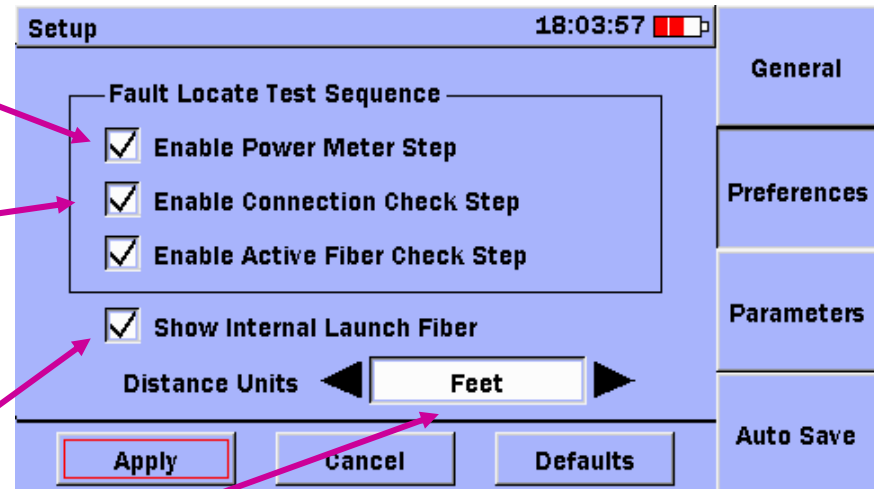
- » Connection check

- Default on

- » Internal launch fiber

- » Units

- Default feet



Test sequence and operation can be customized

Simple, Straightforward Set-ups

- Parameters Tab

- » End/break threshold

- » Splice/bend loss

- » Reflectance

- » Index of refraction

- » Backscatter coefficient

Parameter	Value
End of Fiber (dB)	3.0
Event Loss (dB)	0.25
Reflectance (dB)	-60
IOR	1.4661
BSC	-81.5

User defined or preloaded thresholds

Simple, Straightforward Set-ups

- Auto Save Tab

- » Enable/disable

- » Storage location

- Internal or USB

- » Filename

- » fiber number

Setup 18:05:24 [Battery Icon]

Enable Auto Save

Auto Save Device: USB

Filename Prefix: 123main

Sequence Number: 1

/123main_0001.sor

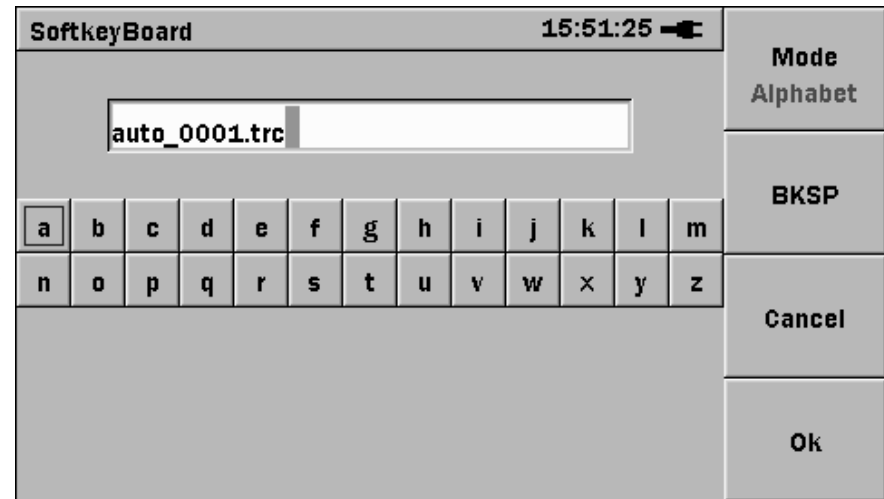
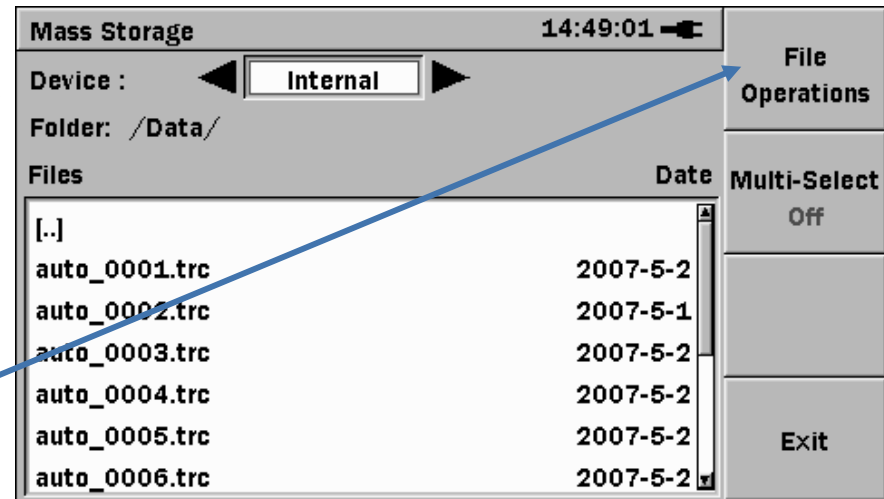
Apply Cancel Defaults

General Preferences Parameters Auto Save

Autosave ensures all files are saved and naming is consistent

Mass Storage Functions

- Select location
 - » Internal or USB
- Full featured
 - » Load
 - » Save
 - » Copy
 - » Create folders
- Integrated keyboard



Additional Features

- Integrated **power meter option** for FTTx maintenance
 - » For measuring power to ONT
 - » Connect to MT9090A/MU909011A
 - » Verify power level and classify
 - PASS – fiber OK, ONT fault
 - FAIL – fiber damaged, launch fault locate
 - » Power meter and fault locate from same port
 - » Complete breakdown as to failure and responsibility
 - ONT, drop cable or feed fiber
- General purpose power meter
 - » -5 to -45dB range

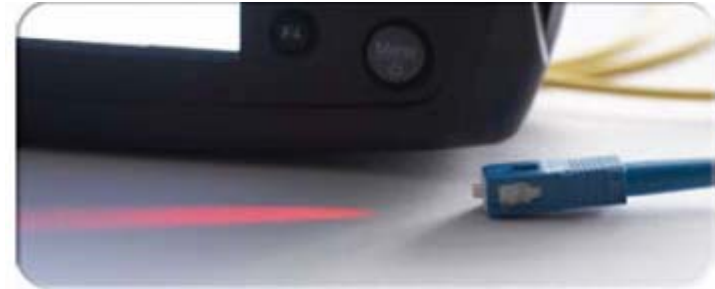
Additional Features

- Visual Fault Locator Option

- » Integrated 650nm laser

- » Can also be used to identify a particular fiber

- » Can be used simultaneously with power meter or OTDR



How to Order

1. Order Mainframe

1. **MT9090A**: Base mainframe

2. Select Module

1. **MU909011A**: Base fault locator module
2. **MU909011A1**: Base fault locator module with VFL
3. **MU909011A2**: Base fault locator module with PM
4. **MU909011A3**: Base fault locator module, PM, VFL

3. Select Module Options

1. **MU909011A-050**: 1550nm, UPC
2. **MU909011A1-050**: 1550nm, VFL, UPC
3. **MU909011A2-050**: 1550nm, PM, UPC
4. **MU909011A3-050**: 1550nm, PM, VFL, UPC
5. **MU909011A-060**: 1550nm, APC
6. **MU909011A-052**: 780nm, UPC
7. **MU909011A-062**: 780nm, APC

See MT909A data sheet for complete list

4. Select Connector Adapter

1. **MT909011A-033**: LC/UPC
2. **MT909011A-037**: FC/UPC
3. **MT909011A-040**: SC/UPC
4. **MT90911A-025**: FC/APC
5. **MT909011A-026**: SC/APC

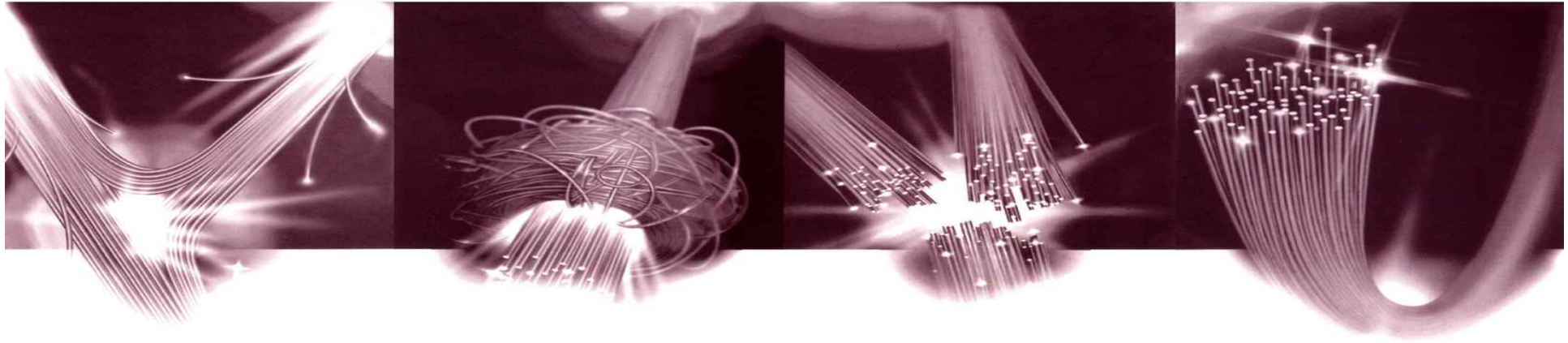
5. Select Accessories

1. **B0602A**: Deluxe softcase
2. **G0202A**: Spare battery pack
3. **J1402**: cigarette lighter cord
4. **MU909011A-ES210**: 12 month extended warranty
5. **MU909011A-ES310**: 24 month extended warranty

MT9090A Specifications

MT9090A CONTROLLER SPECIFICATIONS	
Display	4.3 inches TFT Color LCD (480 x 272 pixels, transmissive)
Interface	USB (v1.1)
Battery type	NiMH
Battery life time	3.5 hours (typ)
Battery charging time	<3 hours
Size (WxHxD)	7.5"x3.8"x1.9" (190mm x 96mm x 48mm)
Weight	2 lbs. (~800g)
Power supply	9VDC 100 to 240 VAC, 50/60Hz
Standard Accessories	Includes controller, battery pack, AC charger, user's guide, soft carry case
MU909011A DROP CABLE FAULT LOCATOR MODULE SPECIFICATIONS	
Center Wavelength	1550 ± 30 nm
Fiber Type	10/125um SMF (ITU-T G.652)
Optical Connector	SC/APC (SC/UPC also available)
Pulse width	<10 ns
Dynamic Range	7 dB (10 dB typical)
Deadzone (Fresnel)	<1 m
Deadzone (Backscatter)	<5 m
Sampling	5 cm
Distance range	2.5 km (8,000 ft) fixed

Very high resolution for complete short fiber analysis



Weitere Informationen finden Sie unter :

www.tso-netze.de

Oder rufen Sie uns an unter :

0700 – TSONETZE

Wir helfen Ihnen gerne weiter !